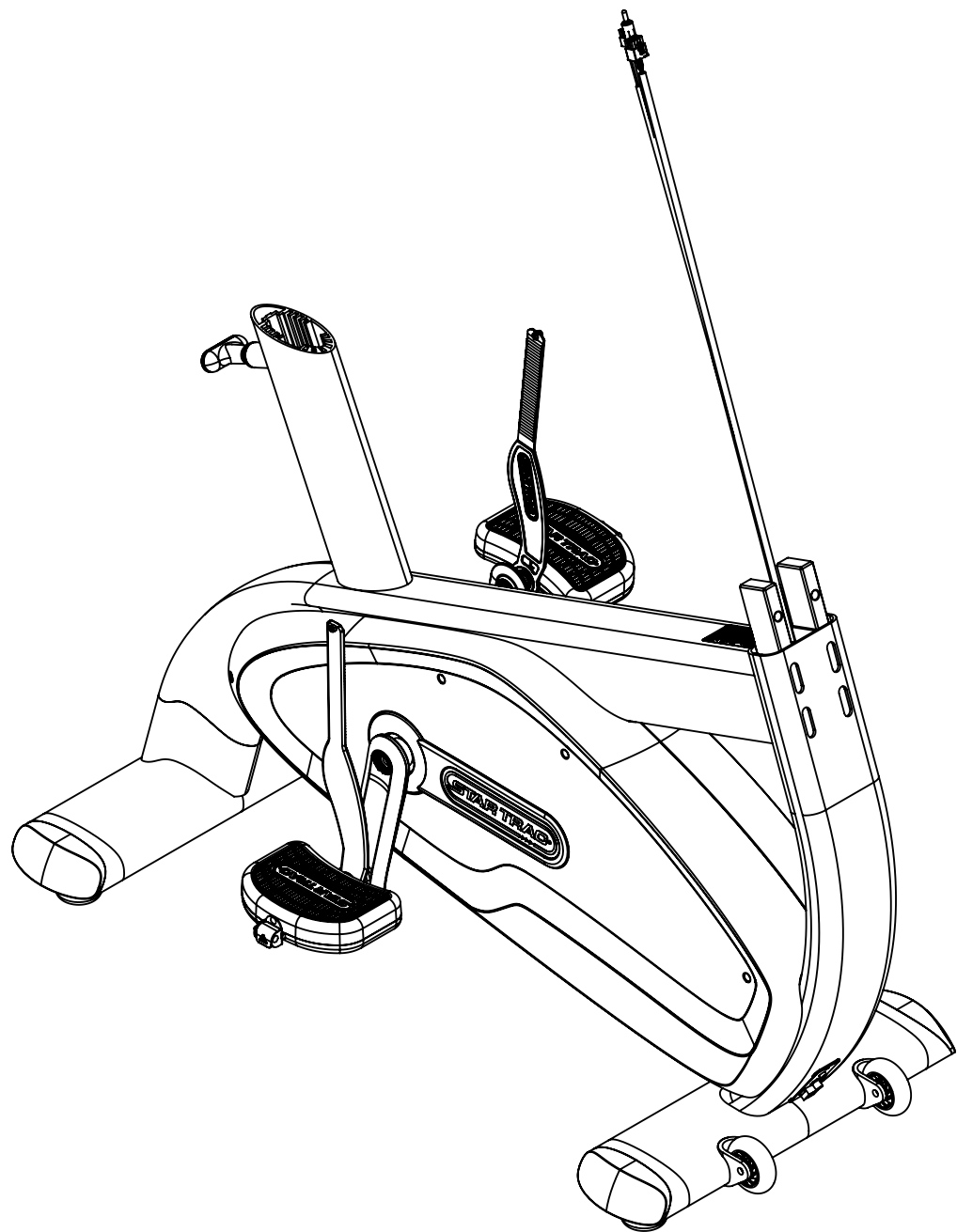


REVISION HISTORY				
REV	DATE	DESCRIPTION	ECO	BY
A	9/1/2011	PRODUCTION RELEASE	13548	SCN



ITEM NO.	PART NUMBER	DESCRIPTION	QTY.	ITEM NO.	PART NUMBER	DESCRIPTION	QTY.
1	050-2215	LABEL, GENERAL WARNING, E-BTS	1	29	718-5257	ENDCAPS, SUPPORT, E-BIKE, GEN 2	4
2	110-3164	SCREW, M4x0.7x16L,PHT,PH,CS,ZI	18	30	718-5258	KEY, DIE CAST, E-BIKES, GEN 2	2
3	110-3167	SCREW, M4x0.7x64L,PHT,PH,CS,ZI	7	31	718-5261-01	ASSY, PEDAL W/ STRAP, L, TAPER, E-BIKES, GEN 2	1
4	110-3171	SCREW, ISO4762, M6x20	4	32	718-5261-02	ASSY, PEDAL W/ STRAP, R, TAPER, E-BIKES, GEN 2	1
5	110-3177	SCREW, ISO4762, M5x16	2	33	718-5264	CRANK ARM, E-BIKES, GEN 2	2
6	110-3230	SCREW, M5x18, SHC, HE, ISO4762	1	34	718-5265	SLEEVE, BB, E-BIKES, GEN 2	1
7	110-3232	SCREW, M4x16, SHC, HE, ISO4762	3	35	718-5266	ASSY, BB, TAPER, E-BIKES, GEN 2	1
8	110-3236	NUT, M6xP1.0, UNLOCK	4	36	718-5267	PULLEY, 8J, 200mm OD, UNIV. E-BIKES	1
9	110-3259	SCREW, M3X0.5X4, PHM, PH, CS, ZI	2	37	718-5268	BB, SPACER, E-BIKES, GEN 2	1
10	110-3459	LOCKING, THREAD INSERT, M8 X 1.25	4	38	718-5273	ASSY, IDLER, E-UB, GEN 2	2
11	110-3469	SCREW, M6 X 1.0, 10mm, SHC, HK, NP	4	39	718-5276	SHROUD, RIGHT, U-BIKE, GEN 2	1
12	120-3246	WASHER, ISO 7089 - M6	4	40	718-5277	NUT, AXLE, B/B, E-/S- BIKE, GEN 2	1
13	120-3251	SPACER, SHROUD, PRO BIKE	1	41	718-5278	ASSY, SHROUD, LT, U-BIKE, GEN 2	1
14	120-3252	WASHER, M5, ISO 7089	1	42	721-1134	ASSY,CONNECTOR,VLAD	1
15	130-1693	BELT, POLY V, 460J8	1	43	721-1176	ASSY, ADT LCB, UB/RB/EL	1
16	140-0220	TIE STRAP, 14"	1	44	730-1666	WASHER,PLAIN,M6	5
17	140-3243	SPRING, EXT	1	45	731-0373	WASHER,PLAIN,M6	4
18	140-3248	SPACER, BRACKET, IDLER	3	46	731-0374	SCREW,M6 X 1.0,16mm,BHC,HK	5
19	140-3250	BRACKET, ANGLE, 4M	2	47	731-0513	STICKER,STAR TRAC,DECO,45MMX191MM	2
20	140-3272	SHIELD, MYLAR, LCB, UB PRO	1	48	740-7023	ASSY, FOOT, W/ OVER MOLD	4
21	718-1087	GENERATOR, HYBRID BRAKE, UB/RB PRO	1	49	740-7173	NUT, 1/2-13, HEX, CS, BO	4
22	718-1123	ASSY, HARNESS, CSAFE EXTENSION	1	50	740-7187	SCREW, M6X1.25X10, BHC, HE, SS	2
23	718-5067	ASSY, BATTERY	1	51	740-7553	BEARING, 6005 SERIES, 2RS	2
24	718-5090	ASSY, HARNESS, COMM, UB PRO	1	52	740-7916	M5 X 16MM, DOWEL PIN	2
25	718-5120	CABLE, COAX, M-M, UB/RB	1	53	740-7951	RR, EXTERNAL, 56MMX2	1
26	718-5121	CABLE,POWER,VLAD,8000/8020	1	54	740-8006	WHEEL, FRONT FOOT, SPINNER	2
27	718-5203	POP PIN, SEAT, UB, GEN-2	1	55	740-8007	BOLT, WHEEL, NXT	2
28	718-5205	FRAME,WELDMENT,UB, GEN-2	1	56	740-8145	SCREW, M8X1.25, BB AXLE	4

NOTES:

**DOCUMENT STATUS:**


CLASS OF WORK	UNLESS OTHERWISE SPECIFIED DIMS ARE IN mm. TOLERANCES FOR MEASURE OF LENGTH ARE:							ANGLES = ±2°		
	0.5 to 3	> 3 to 6	> 6 to 30	> 30 to 120	> 120 to 400	> 400 to 1000	> 1000 to 2000	> 2000		
FINE	±0.05	±0.05	±0.1	±0.15	±0.2	±0.3	±0.5	----		
MEDIUM	±0.1	±0.1	±0.2	±0.3	±0.5	±0.8	±1.2	±2		
COARSE	±0.2	±0.3	±0.5	±0.8	±1.2	±2	±3	±4		
VERY COARSE	----	±0.5	±1	±1.5	±2.5	±4	±6	±8		

MATERIAL  
SEE BOM

FINISH  
N/A

VENDOR: LAND AMERICA P/N: E-UB-01E

THIRD ANGLE PROJECTION		
DRAWN	INITIAL SCN	DATE 7/1/2011
CHECKED		
APPROVED		

CORE INDUSTRIES, INC. DBA  
  
 14410 Myford Road  
 Irvine CA 92606

STARTRAC PART NO: **718-5272** REV: **A**

TITLE: **ASSY, BASE FRAME, E-UB , GEN 2**

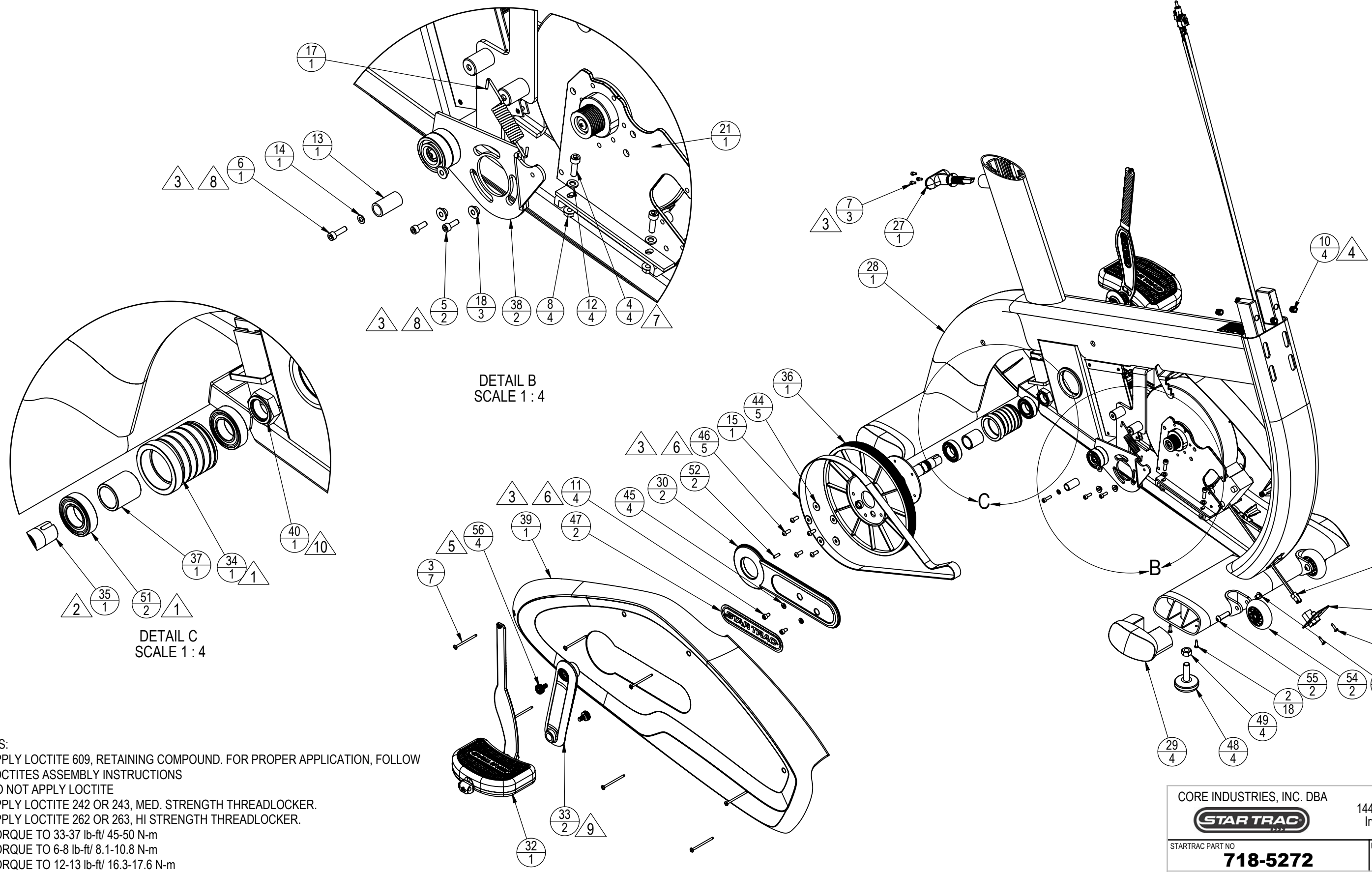
SCALE: 1:8 | SHEET 1 OF 3 | SHEET SIZE: B

NOTICE OF PROPRIETARY INFORMATION  
 THIS DOCUMENT SHALL NOT BE REPRODUCED NOR  
 SHALL THE INFORMATION CONTAINED HEREIN BE USED  
 BY OR DISCLOSED TO OTHER EXCEPT AS EXPRESSLY  
 AUTHORIZED BY CORE INDUSTRIES, INC., D.B.A. STAR TRAC.

9 8 7 6 5 4 3 2 1

J  
I  
H  
G  
F  
E  
D  
C  
B  
A

J  
I  
H  
G  
F  
E  
D  
C  
B  
A

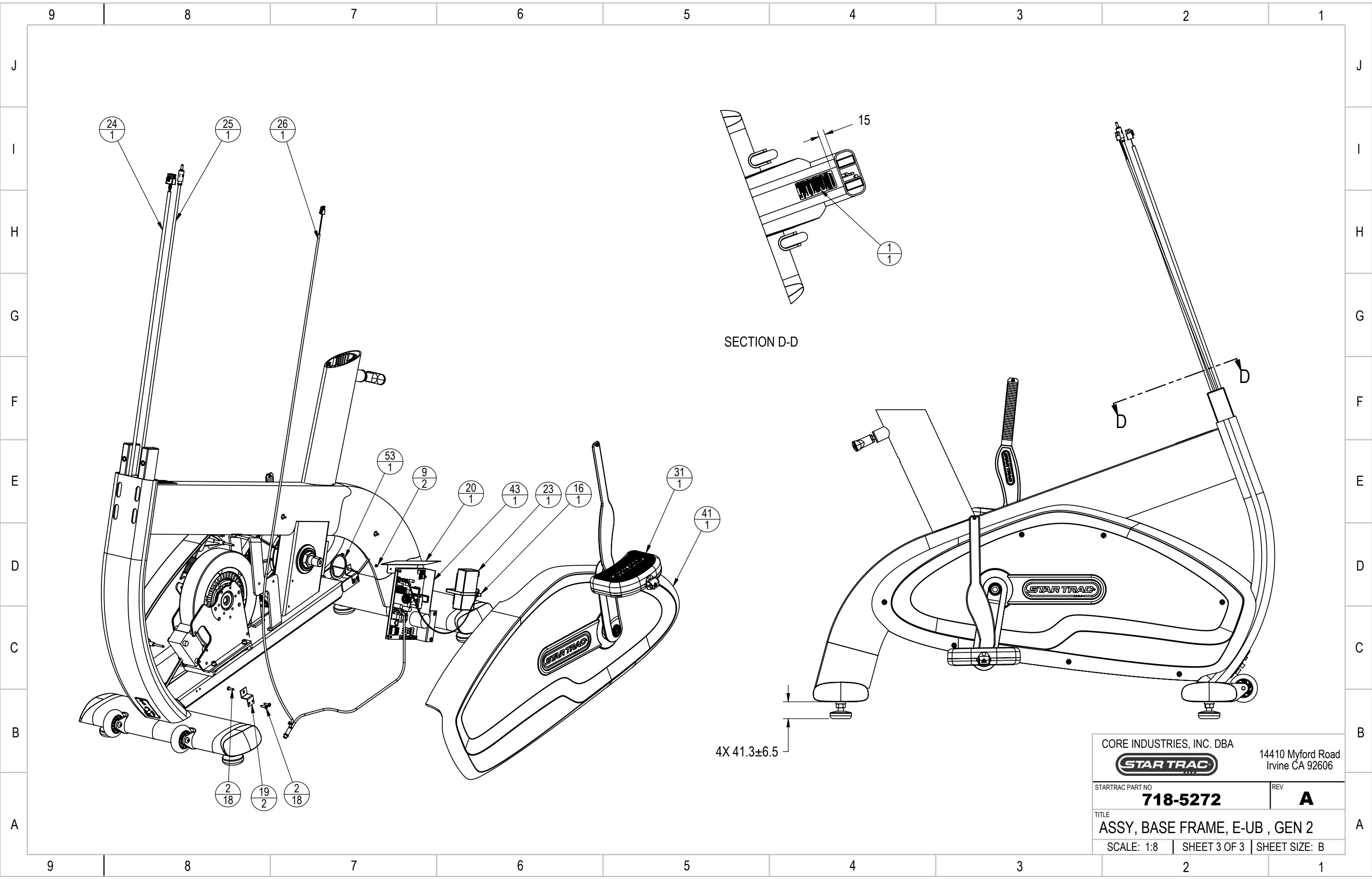


- NOTES:
1. APPLY LOCTITE 609, RETAINING COMPOUND. FOR PROPER APPLICATION, FOLLOW LOCTITES ASSEMBLY INSTRUCTIONS
  2. DO NOT APPLY LOCTITE
  3. APPLY LOCTITE 242 OR 243, MED. STRENGTH THREADLOCKER.
  4. APPLY LOCTITE 262 OR 263, HI STRENGTH THREADLOCKER.
  5. TORQUE TO 33-37 lb-ft/ 45-50 N-m
  6. TORQUE TO 6-8 lb-ft/ 8.1-10.8 N-m
  7. TORQUE TO 12-13 lb-ft/ 16.3-17.6 N-m
  8. TORQUE TO 4-6 lb-ft/ 5.4-8.1 N-m
  9. PRESS CRANK ARM ONTO BOTTOM BRACKET WITH A LOAD OF 11023 lbs/ 5000 kg
  10. TORQUE TO 48-50 lb-ft/ 65-67.8 N-m

CORE INDUSTRIES, INC. DBA		14410 Myford Road Irvine CA 92606	
<b>STAR TRAC</b>			
STARTRAC PART NO	<b>718-5272</b>	REV	<b>A</b>
TITLE <b>ASSY, BASE FRAME, E-UB , GEN 2</b>			
SCALE: 1:8	SHEET 2 OF 3	SHEET SIZE: B	

9 8 7 6 5 4 3 2 1





SECTION D-D

CORE INDUSTRIES, INC. DBA		14410 Myford Road
<b>STAR TRAC</b>		Irvine CA 92606
STARTRAC PART NO	REV	
<b>718-5272</b>	<b>A</b>	
TITLE		
<b>ASSY, BASE FRAME, E-UB , GEN 2</b>		
SCALE: 1:8	SHEET 3 OF 3	SHEET SIZE: B